

Product's Features

- Metal lamp body
- Gray shell
- SHigh temperature resistant wire

Technical parameters

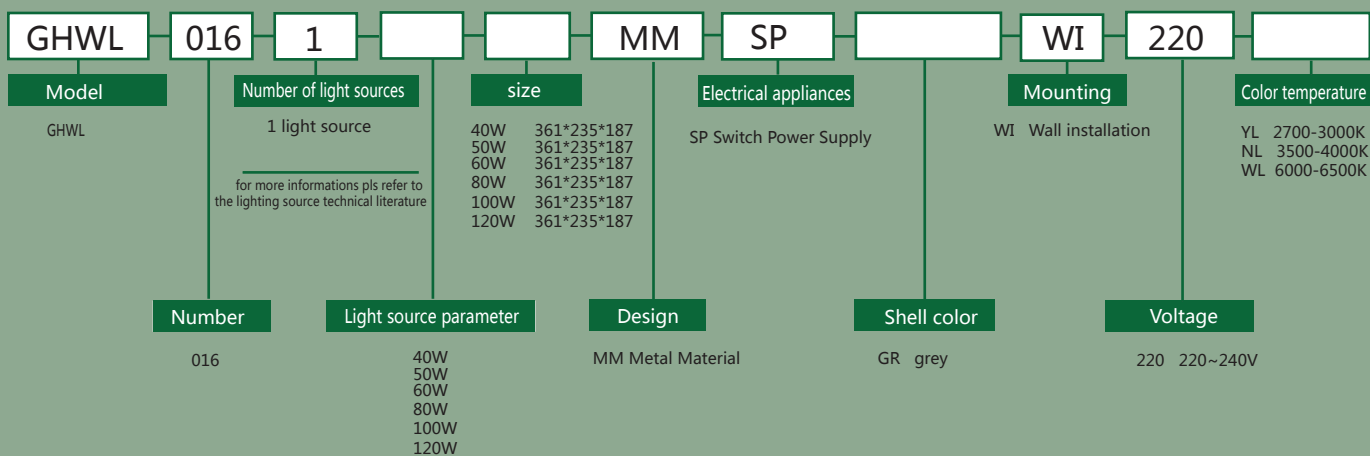
- Light type : LED
- Lamp Base Type : LED
- Light Power : 40-120W
- Working Power : AC220-240V , 50Hz
- Color rendering index:Ra ≥ 80 , Ra ≥ 90
- Lumen value:100LM/W,120LM/W
- Color temperature:2700K-6500K
- Life expectancy: 50,000 h (Ta=25°C)
- IP Grade : IP65
- Insolution Grade:Class 1
- Safety Standards:IEC598

APplications

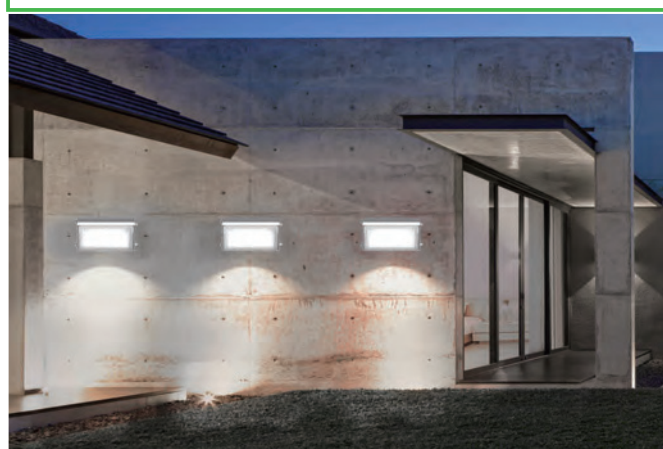
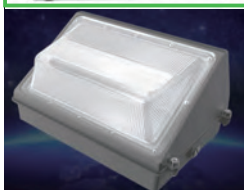
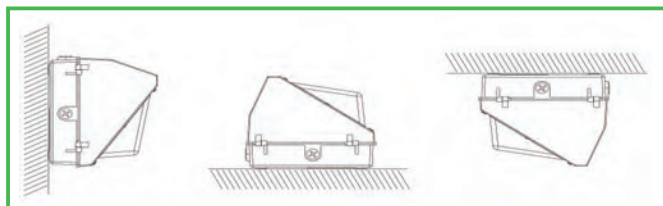
- Walls of offices, shopping malls, schools, factories, houses, etc



Order Guide :



Remark:compliance with the requirement of the buyer



Model	Number	Number of light sources	Light source power(W)	Size(mm)
GHWL	016	1	40	361*235*187
GHWL	016	1	50	361*235*187
GHWL	016	1	60	361*235*187
GHWL	016	1	80	361*235*187
GHWL	016	1	100	361*235*187
GHWL	016	1	120	361*235*187

Lighting control	Dimming method	luminous flux
Manual control Intelligent control Emergency control	Dim0/1-10V dimmable DALI dimmable Triac dimmable DMX512 dimmable Not dimmable	100LM/W 120LM/W

LED driver	light source	Life expectancy
Optional configuration brand: MEAN WELL PHILIPS OSRAM TRIDONIC LTECH LIFUD KEGUPOWER	Optional configuration brand: CREE BRIDGELUX PHILIPS OSRAM EPISTAR SANAN	50,000 h (Ta=25°C)

Certification certificate	Color rendering	Color temperature
CE RoHS COGC CCC	Ra ≥ 80 Ra ≥ 90	2700-3000K 3500-4000K 6000-6500K